

c
aph2
pn2
aph1
pn1
apt
pt

spazi espositivi-mostre temporanee		
mq	h	
1	160 mq	5.45 ml
2	203 mq	3.45 ml
3	109 mq	5.80 ml
4	24 mq	3.30 ml
5	72 mq	5.70 ml
6	138 mq	5.60 ml
7	68mq	3.30 ml

spazi di supporto		
Ingresso	26 mq	2.80 ml
archivio	68 mq	5.27 ml
servizi igienici	30.2 mq	2.40 ml

uffici		
	9 mq	2.60 ml

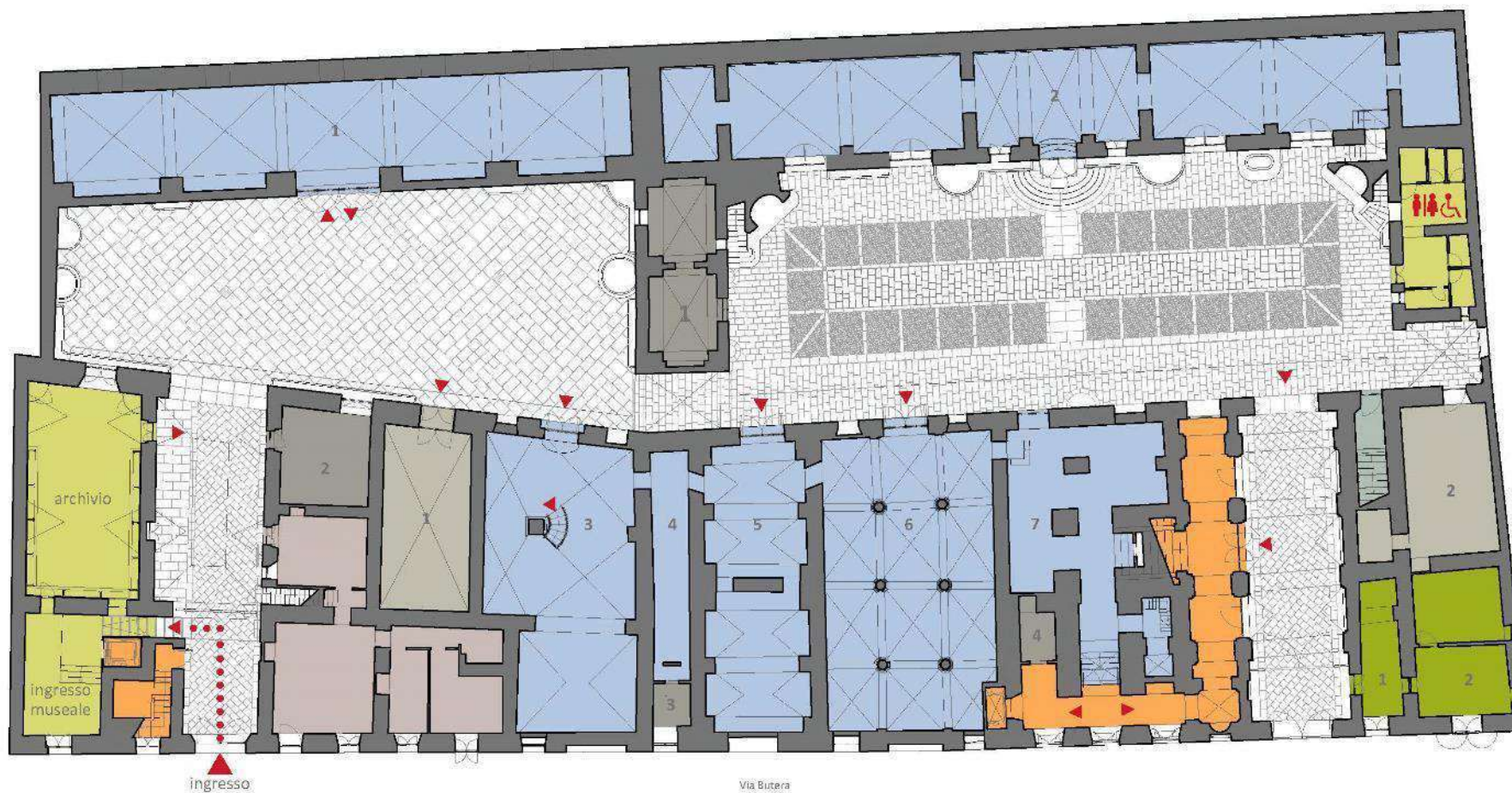
locali tecnici		
mq	h	
1	35 mq	2.20 ml
2	23 mq	2.90 ml
3	4 mq	2.70 ml
4	6 mq	3.90 ml

depositi		
1	45 mq	3.10 ml
2	42 mq	2.60 ml

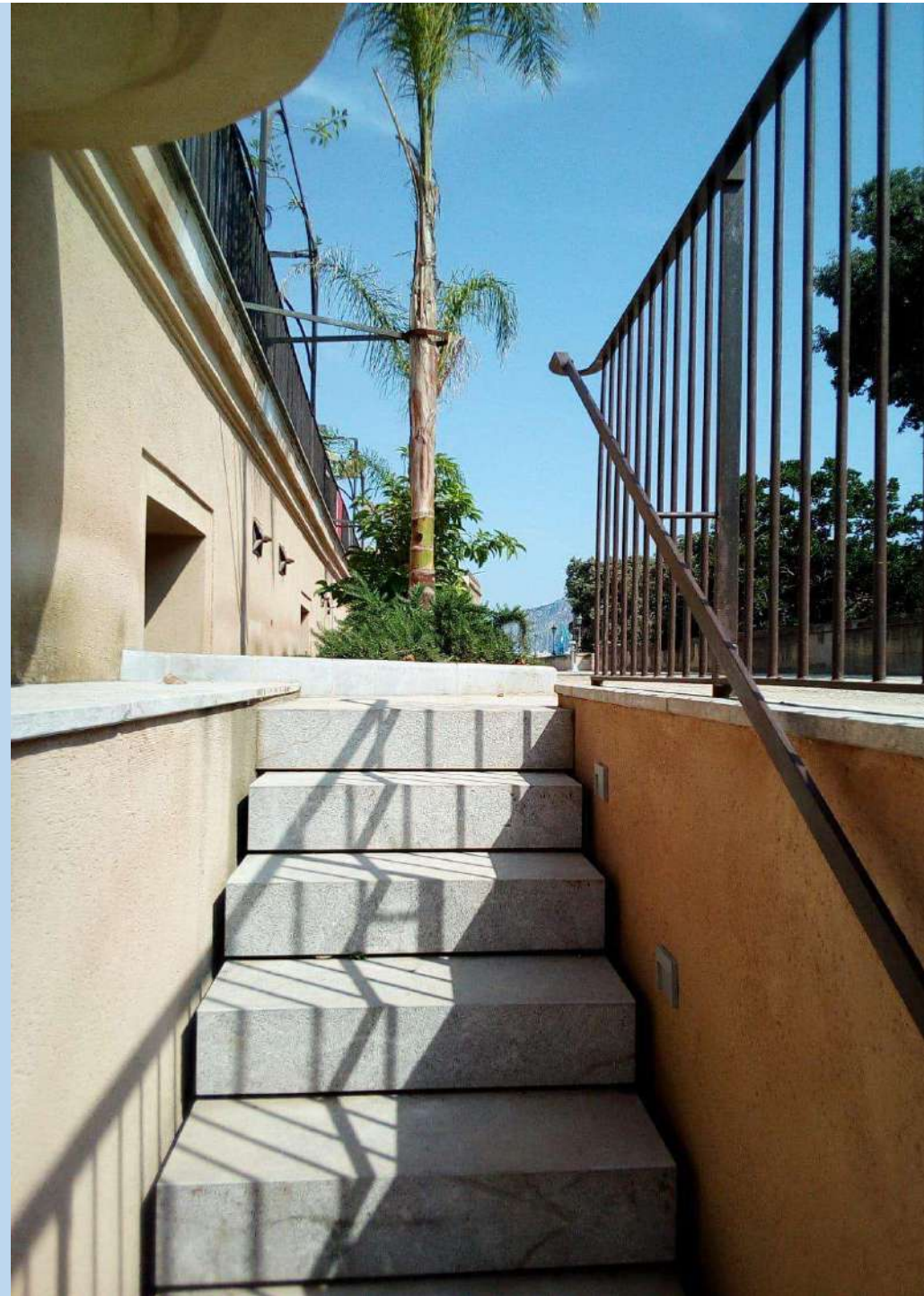
locale commerciale		
1	15 mq	2.50 ml
2	37 mq	2.90 ml

guardianeria		
	80 mq	3.35 ml

-  collegamenti verticali
-  percorsi pubblici

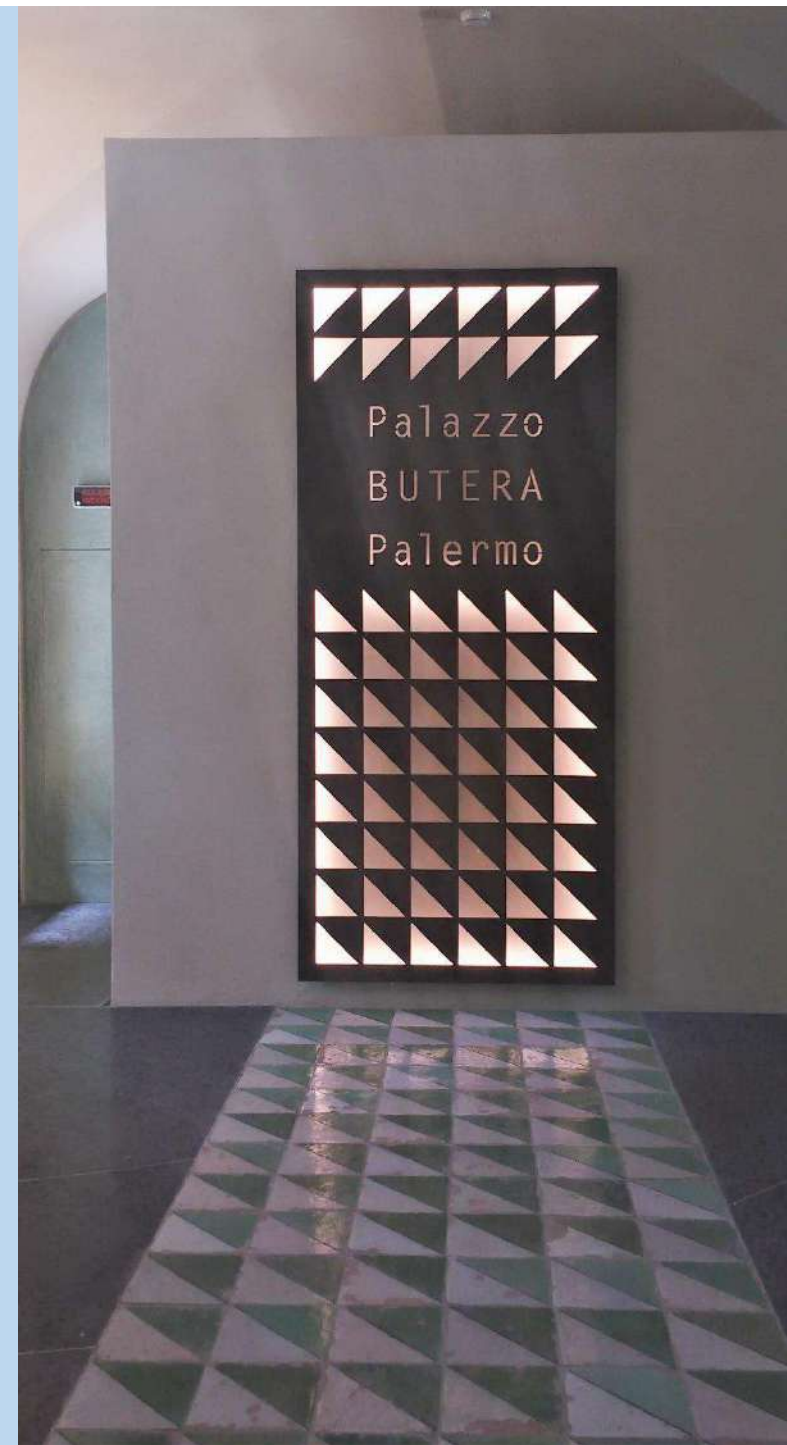


Palazzo Butera Piano Terra (quota + 0.43 .ca)



Le cattive

CAFFÈ VINO CUCINA





c
apr2
pn2
apr1
pn1
apt
pt

	mq	h
▲ spazi espositivi - mostre temporanee 1	23 mq	2.20 ml
▲ locali commerciali caffetteria	265 mq	3.20 ml
1	70 mq	3.60 ml
▲ uffici	85 mq	2.60 ml
1		
2	103 mq	2.60 ml
▲ locali tecnici		
1	4 mq	1.00 ml
2	12 mq	2.40 ml

- ▲ collegamenti verticali
- ▶ percorsi pubblici
- ▲ spazi privati



Palazzo Butera Ammezzato sul Piano Terra (quota +4.13 .ca)



Vol II 400 p. 25

p. 27
p. 28

23

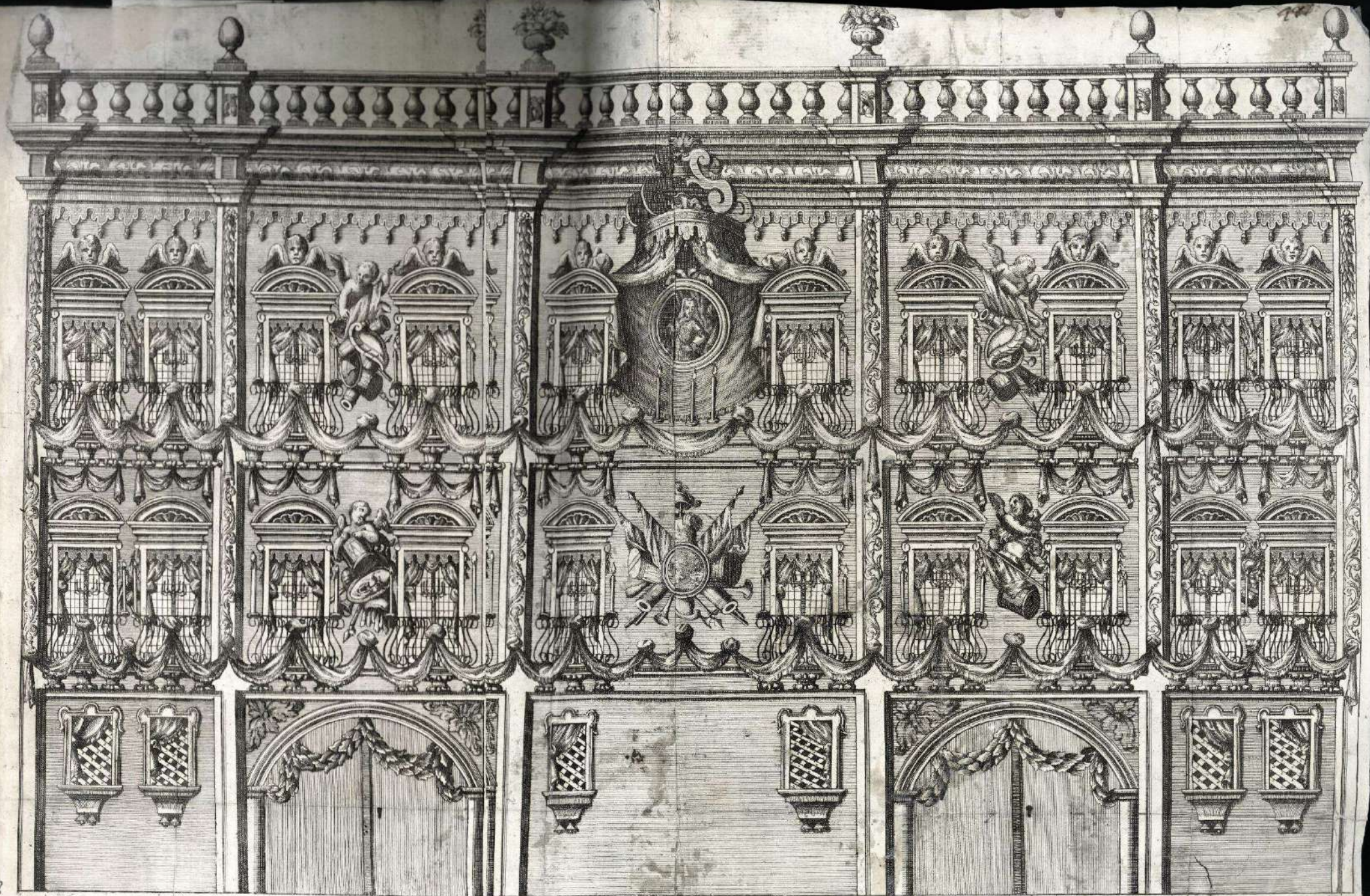
AFFACCIATA MODERNA DEL CASINO NELLA STRADA DI S. NICOLO LA CALSA, DELL'ECCELLENTISSIMO SIGNOR DUCA DI BRANCIORTI.



Scala di canne dieci



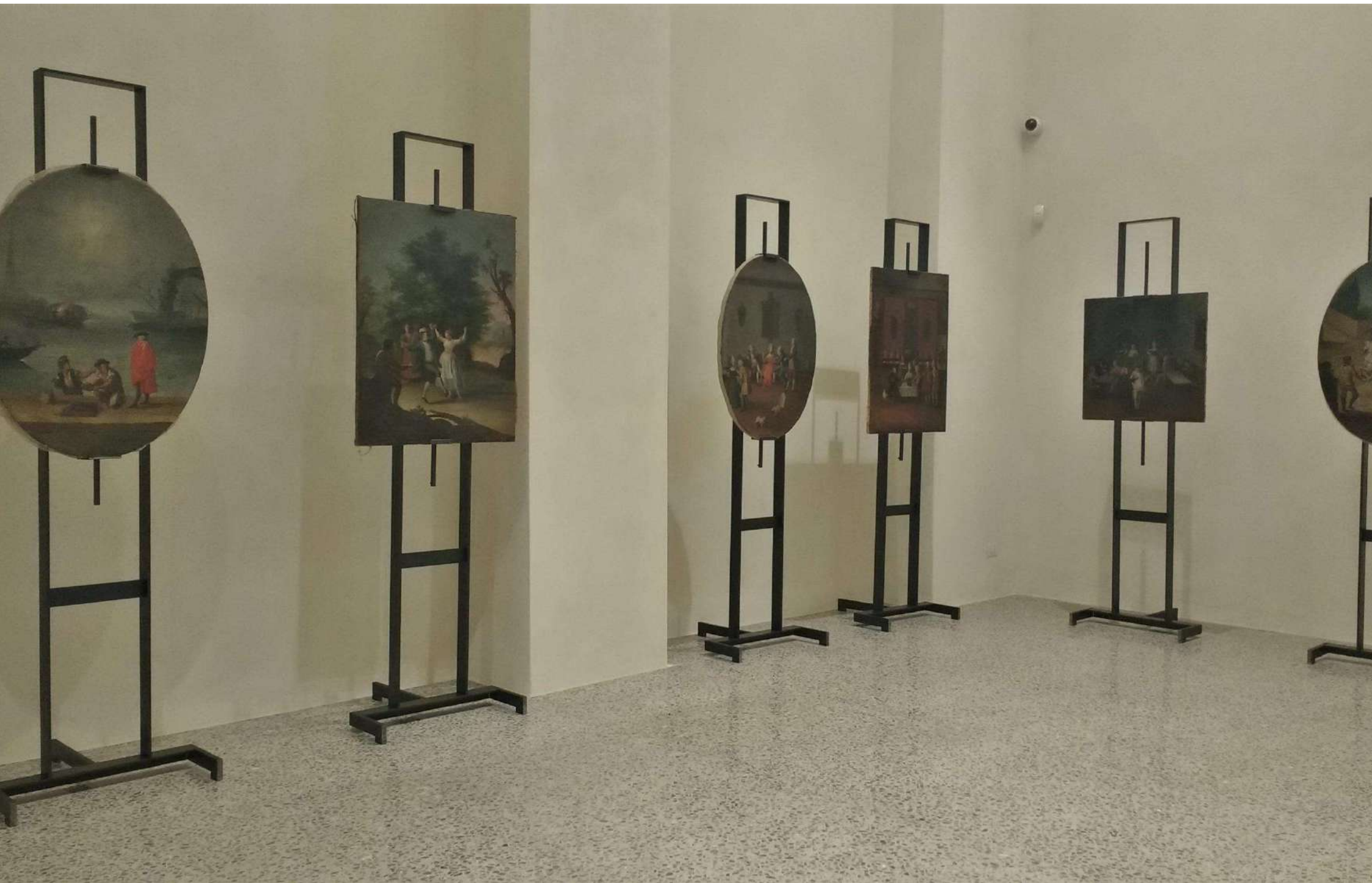
26







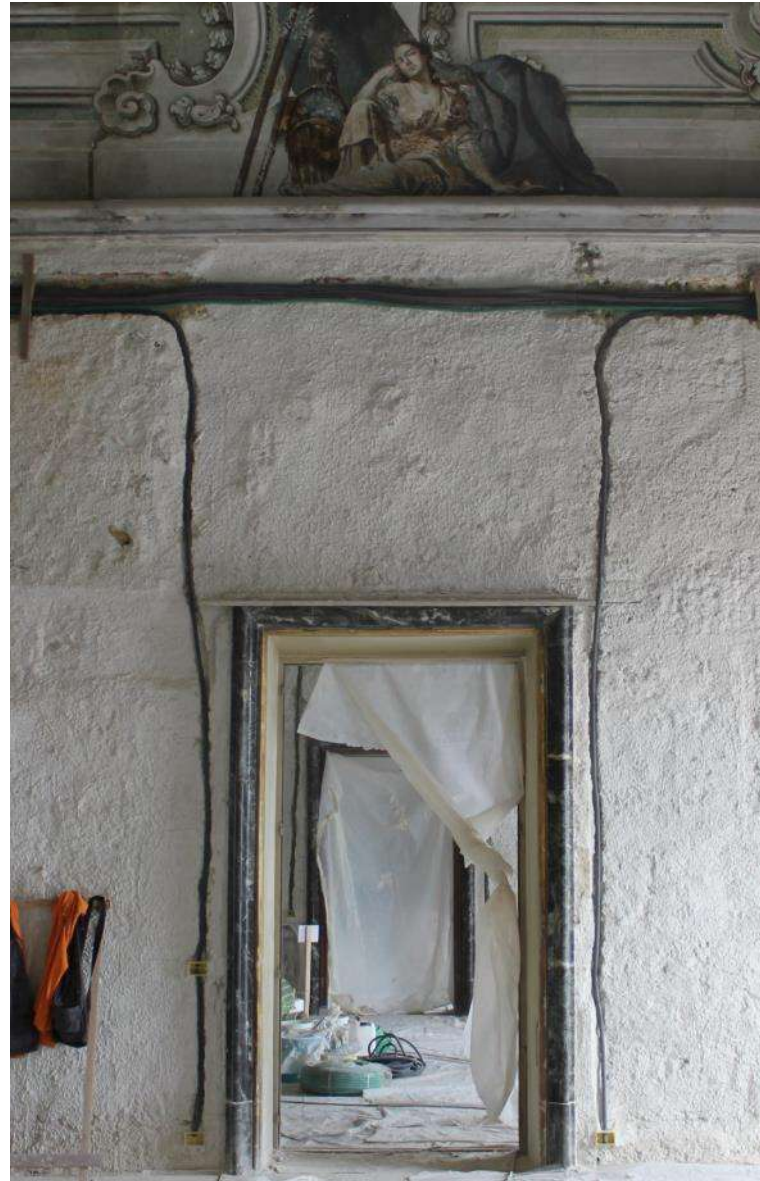






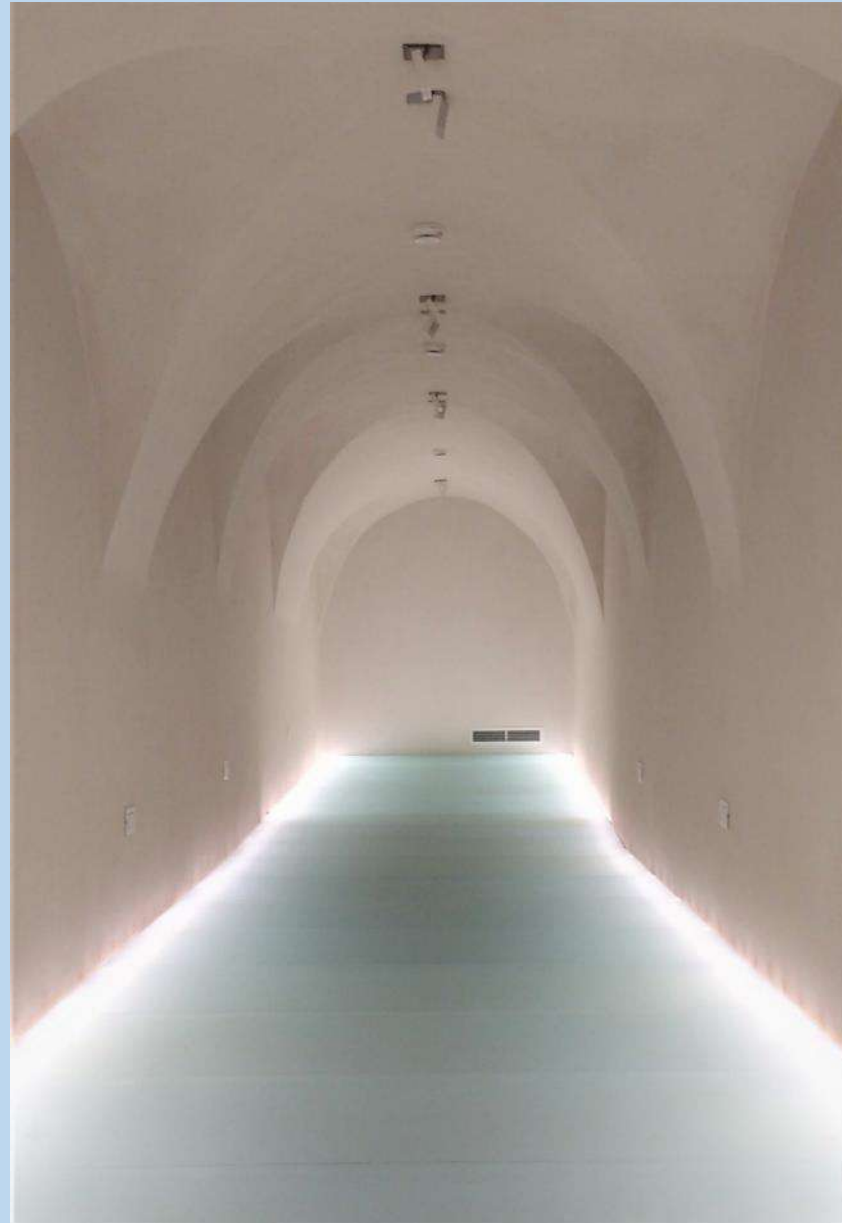


















THEY WILL REMAIN WITH US UNTIL WE HAVE A SENSE OF NATIONAL IDENTITY. THE MEMORIALS AT ALL IS A TRIBUTE TO THE 19
MEASURES OF AUGUST 11TH AT THE LEY'S CAL INVISION OF PERMANENT THIS MARK IS DEDICATED ON THE 19TH ANNIVERSARY OF
THESE EVENTS TO THE MEMORY OF BERTEN ULBRICH WHO DIED IN THE LAST SQUARE'S MONUMENT HERE OURS TOM MILLERS

BERND & HILLA BECHER

Mercoledì 24 ottobre 1979

Massimo Valsecchi 20123 Milano via S. Marta, 11 tel. 872641

TOM PHILLIPS

Mercoledì 25 marzo 1981

Massimo Valsecchi 20123 Milano via S. Marta, 11 tel. 872641



UN DISEGNO, SU UN MURO
DELLA NUOVA SALA
ALL'11 DI VIA SANTA MARTA

A DRAWING, ON A WALL
OF THE NEW ROOM AT
11, VIA SANTA MARTA

DI
BY
DAVID TREMLETT

MERCOLEDÌ 18 FEBBRAIO 1981

MASSIMO VALSECCHI 20123 MILANO VIA S. MARTA 11, tel. 872641

CLAUDIO COSTA

L'INEFFABILE CIRCOLAZIONE DELL'UMANO

Giovedì 26 febbraio 1981

Massimo Valsecchi 20123 Milano via S. Marta, 11 tel. 872641

ANNE E PATRICK POIRIER

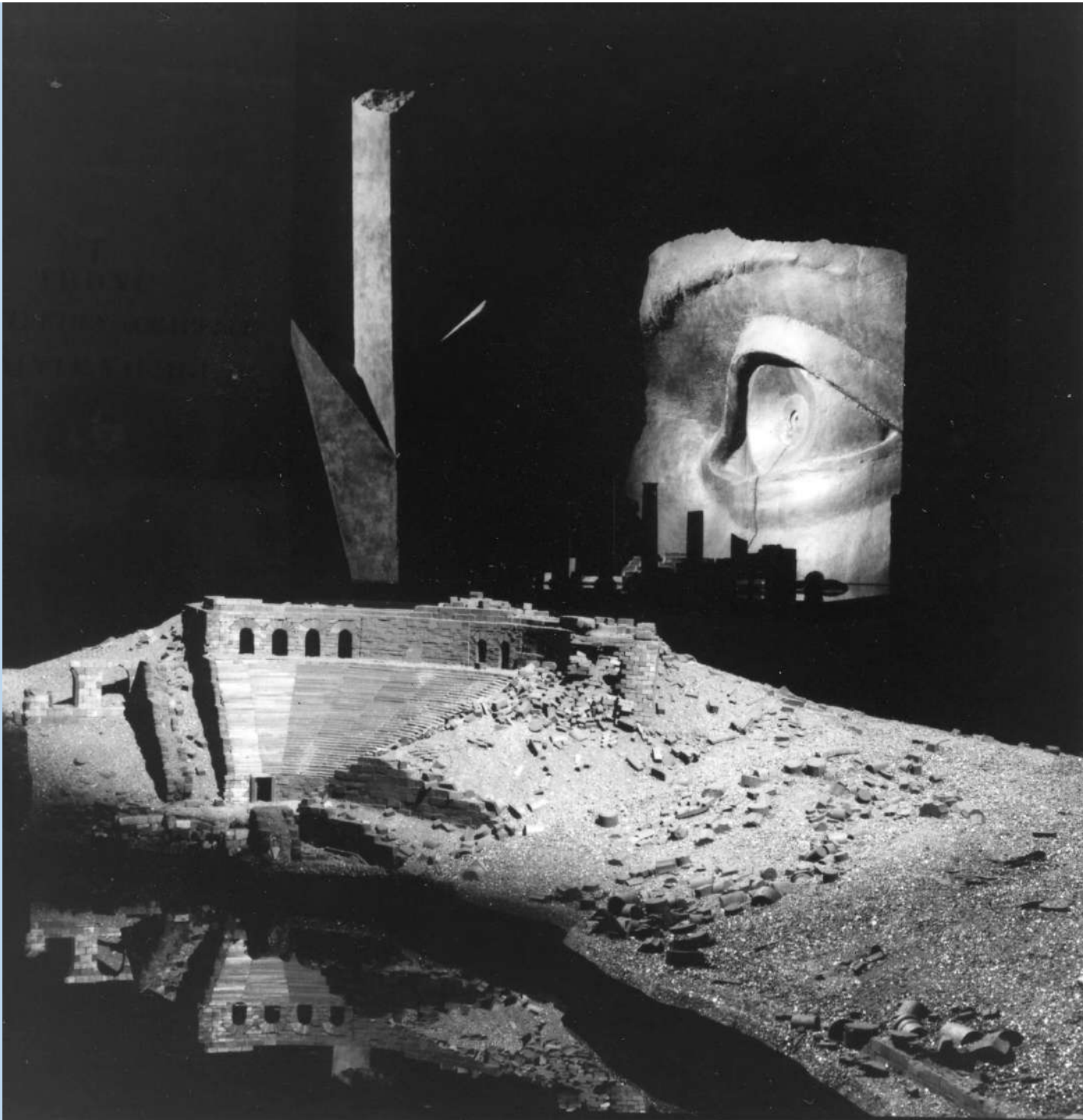
LA STANZA DELLO SGUARDO
SCENZI SU PERALL

Mercoledì 23 aprile 1980

Massimo Valsecchi 20123 Milano via S. Marta, 11 tel. 872641

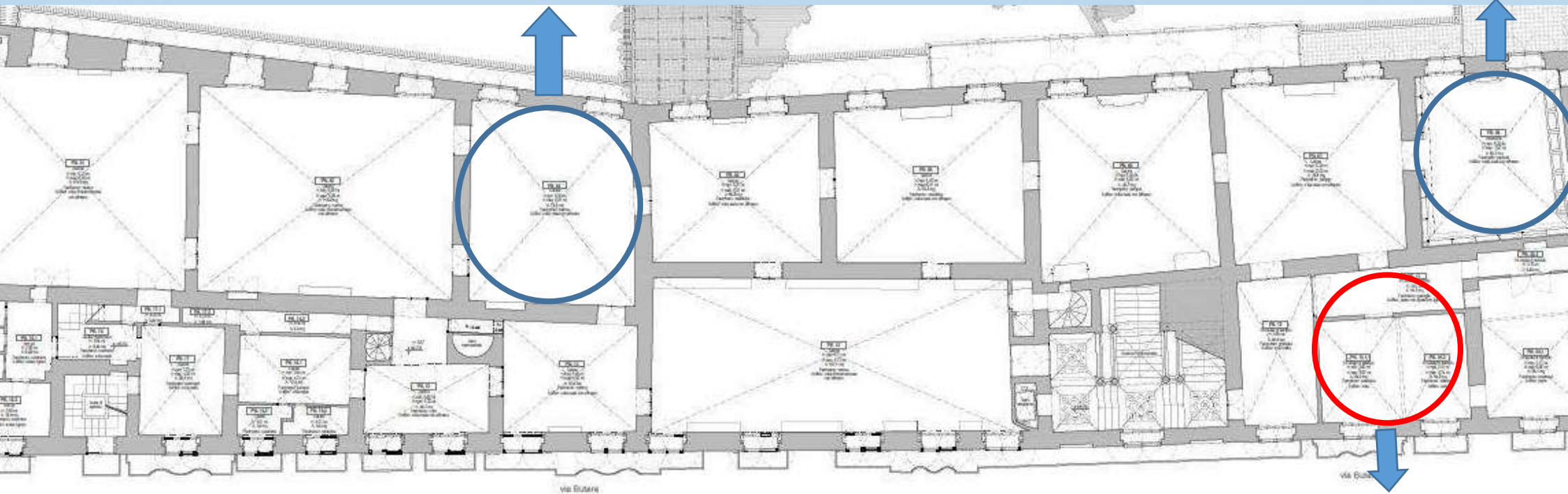






**Anne and Patrick Poirier
Gothic room**

**A. and P. Poirier
Library**



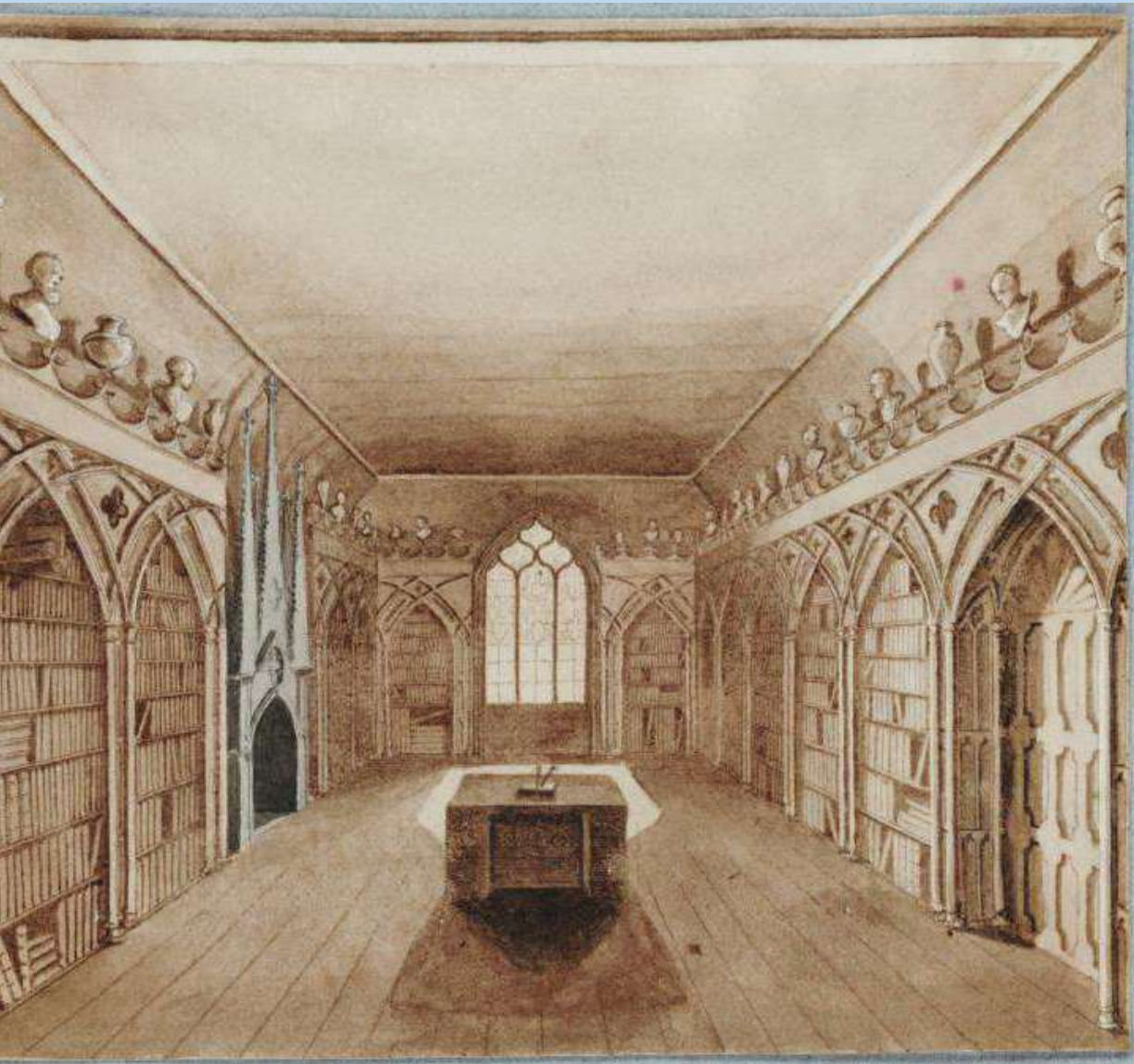
David Tremlett

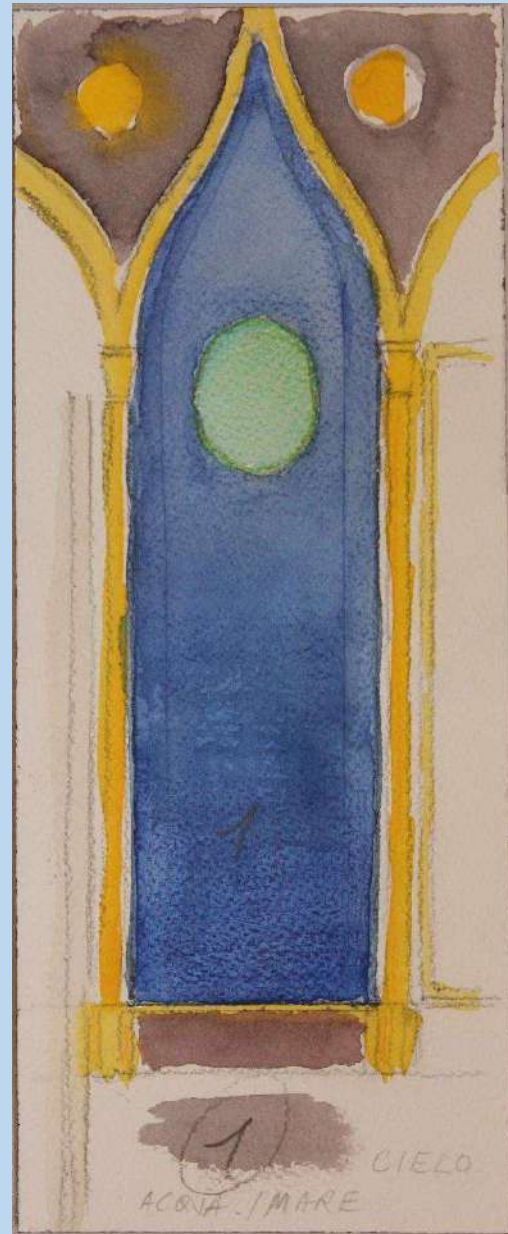
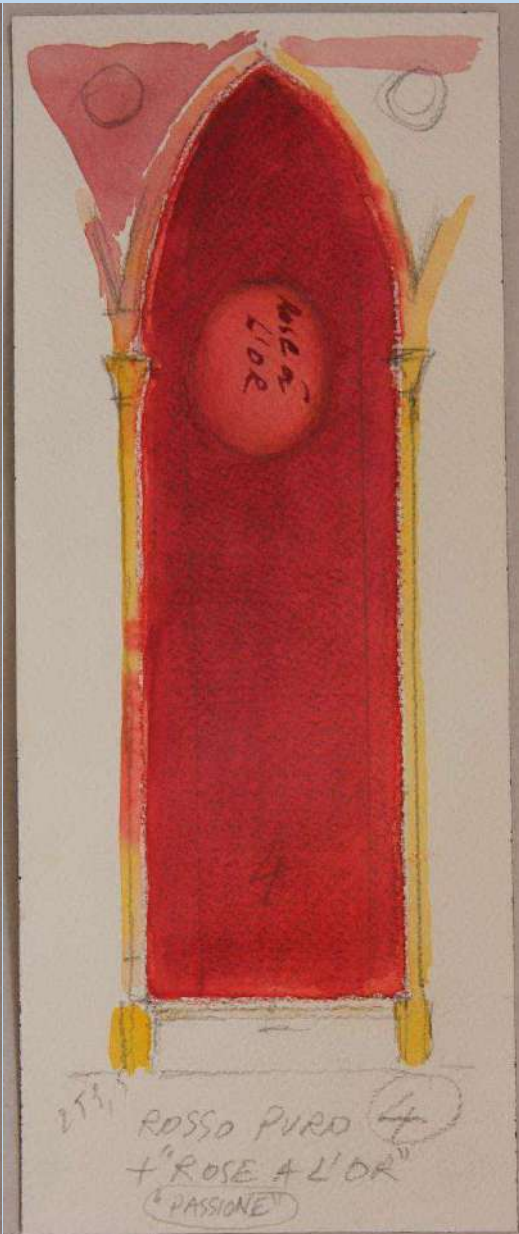
ta del piano nobile

















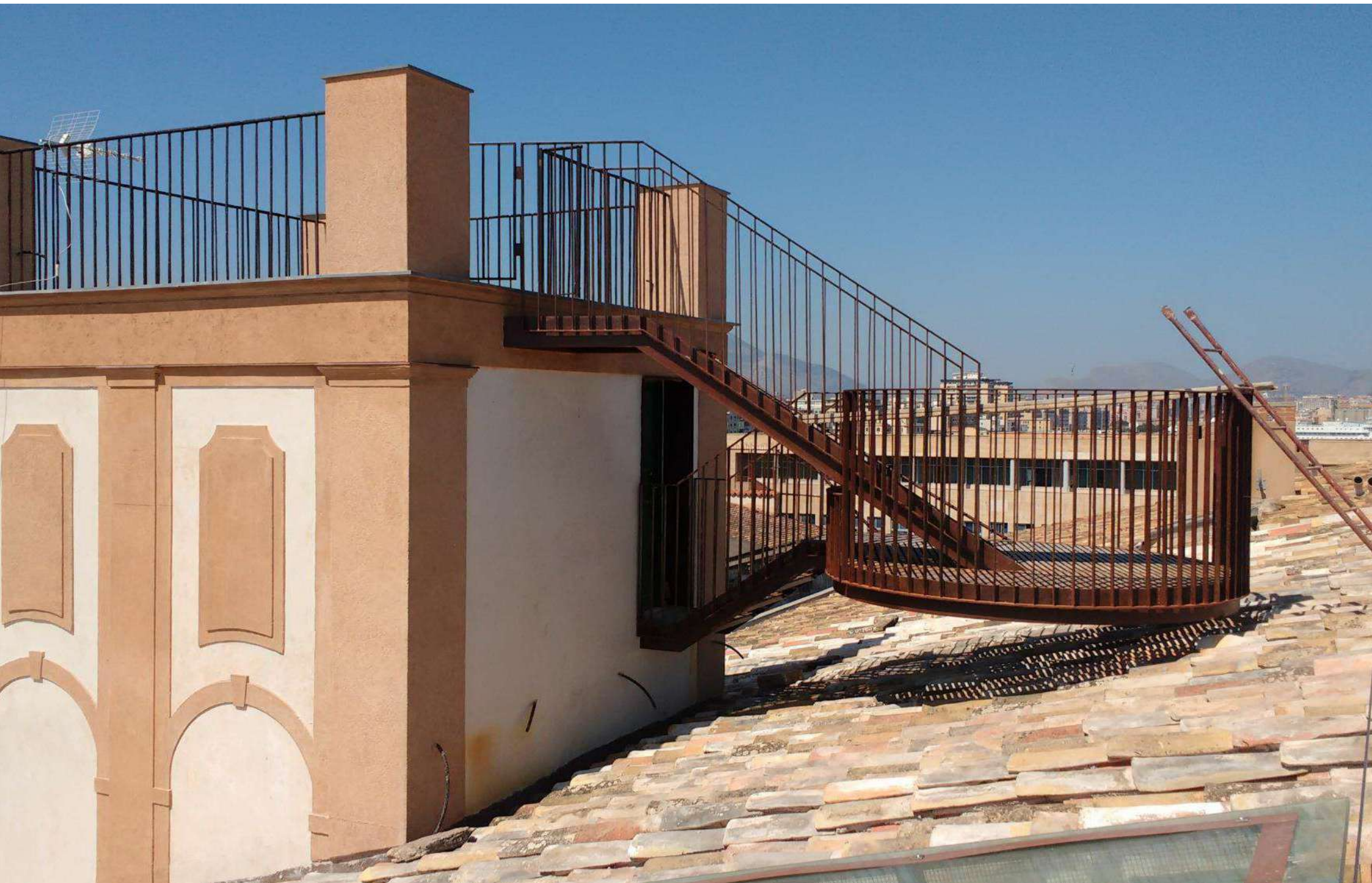














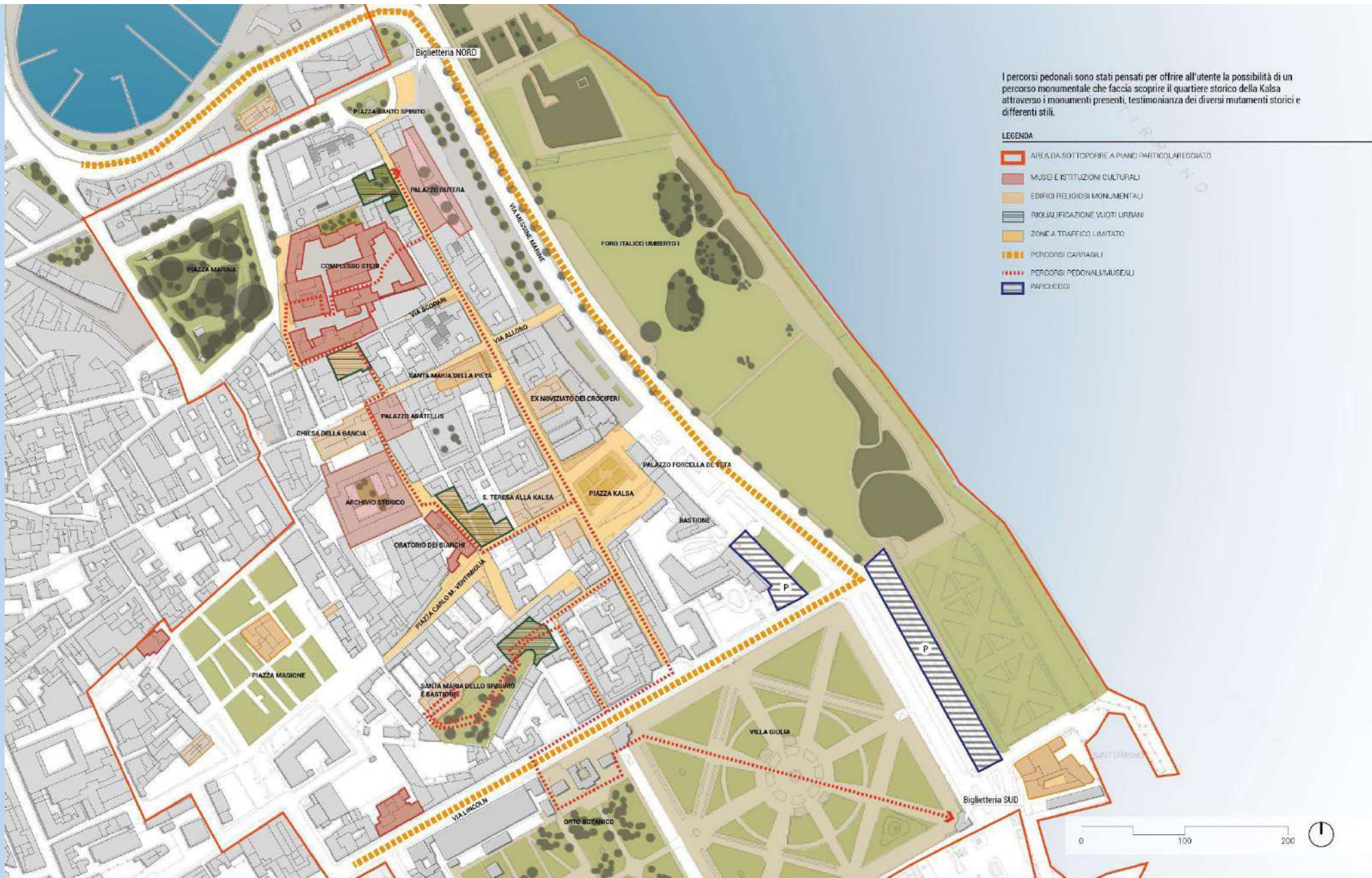


TAVOLA
5 Studio di fattibilità per la rigenerazione urbana delle aree del Centro Storico di Palermo connesse alla integrazione tra il Complesso Monumentale dello Steri e Palazzo Butera
PERCORSI MONUMENTALI



Dott. Massimo Valsecchi
 Arch. Giovanni Cappelletti
 Ing. Marco Giammona
 Dott. Claudio Gulli

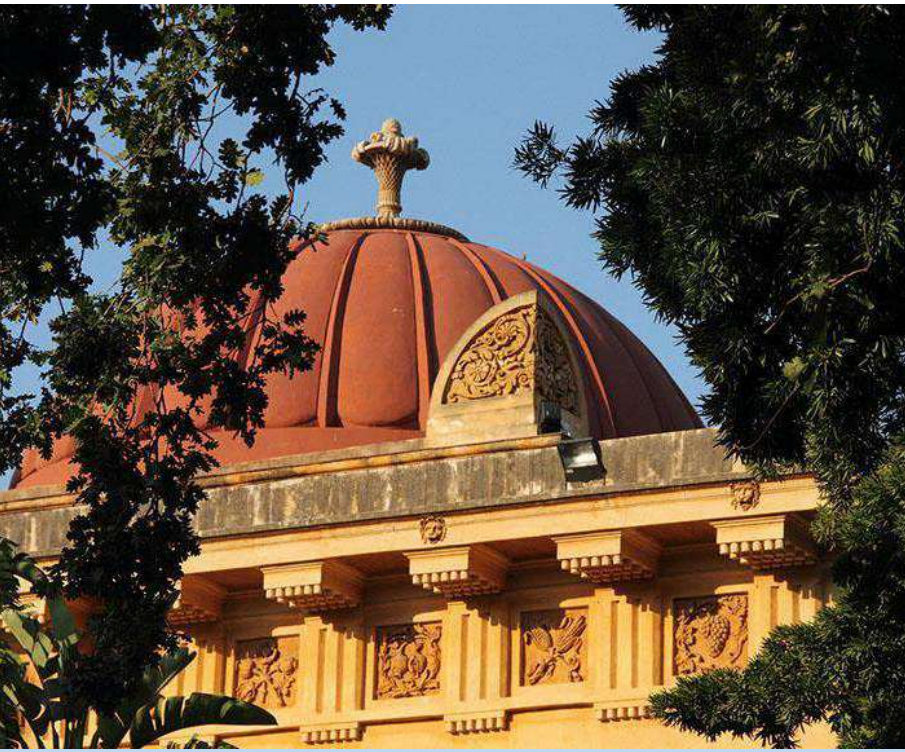
PAU
 DIPARTIMENTO
 DI ARCHITETTURA
 UNIPA
 Prof. Arch. Maurizio Carta
 Prof. Arch. Barbara Lino
 Dott. Pianif. Cosimò Camarà

UNIVERSITÀ
 DEGLI STUDI
 DI PALERMO
 Prof. Ing. Mario Di Paola
 Ing. Antonio Sorce
 Arch. Costanza Conti

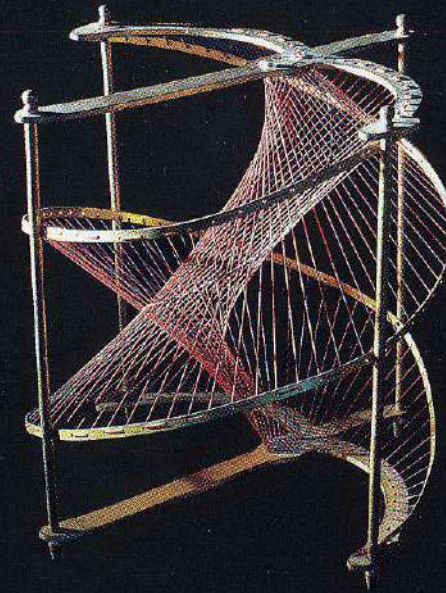
SISTEMA
 MUSEALE
 DI ATENEO
 Prof. Dott. Paolo Inglese
 Dott.ssa Aloisa Moncada

SocialFare
 Centro per l'Innovazione Sociale
 Dott.ssa Laura Crestano



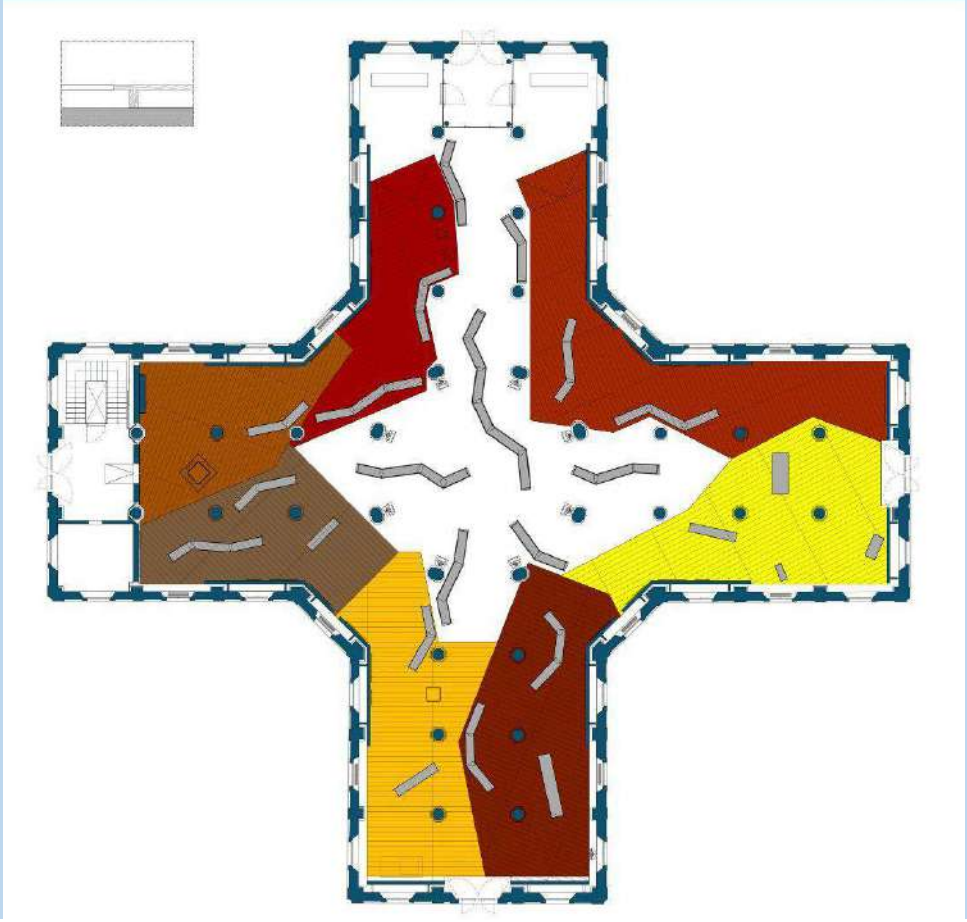
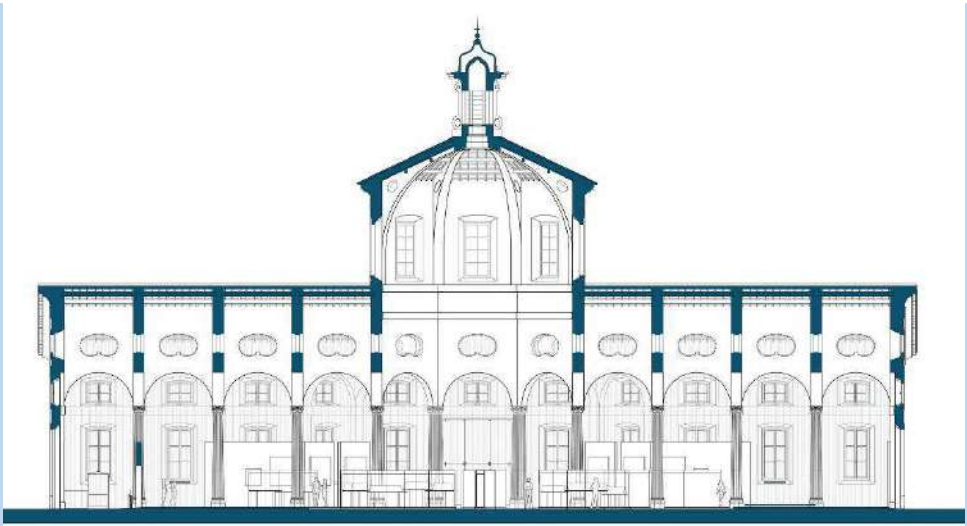


IL TESORO DELLA STATALE



Collezioni e identità di un grande Ateneo











Marcel Duchamp
Nude Woman
1911
Oil on canvas
The painting is a study of the female form, showing the artist's interest in the nude female figure. It is a study of the female form, showing the artist's interest in the nude female figure. It is a study of the female form, showing the artist's interest in the nude female figure.

Marcel Duchamp
Nude Woman
1911
Oil on canvas
The painting is a study of the female form, showing the artist's interest in the nude female figure. It is a study of the female form, showing the artist's interest in the nude female figure. It is a study of the female form, showing the artist's interest in the nude female figure.







